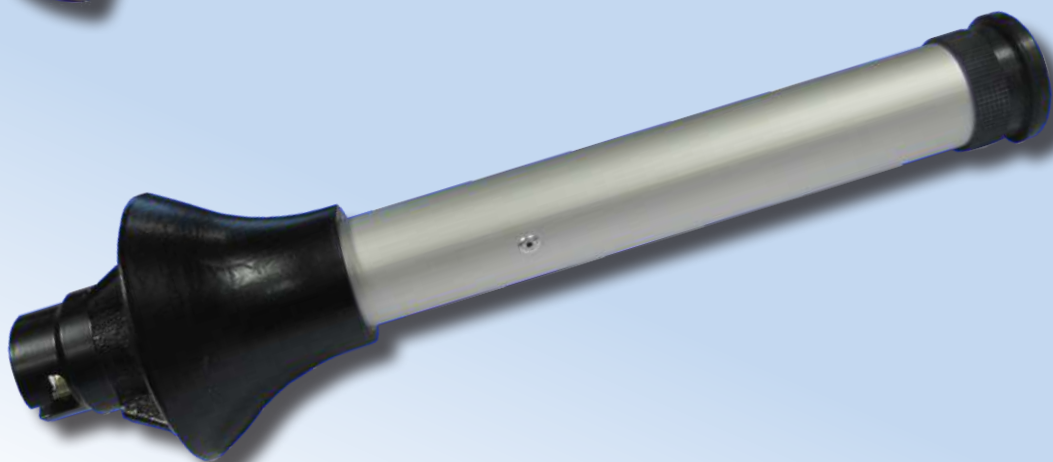


H.P. PISTOL PARTNER



BALANCED HIGH PRESSURE PISTOL PARTNER

The **PARTNER** High pressure pistol is made of a wholly hardened and tempered alloy, painted with epoxidated dust at 180°. Nozzle and tube in a large thickness anodised alloy. Hand grip in graphitized black shock resistant nylon. Internal control parts in **INOX** steel and brass with gaskets in pressed lubrifon. Rubber buffer on front and on the lever; two rubber grips on the hand grip (with possibility to personalise them); Hydraulic shock absorber set-in upper part of the hand grip, this one annuls water hammering in phase of opening and closing of jet. Foam tube with quick coupling as option. Lower rotating coupling in brass on sphere with fire hose connection UNI 38x1,5 or GAS 11/2.

On request : 150 or 180 L/min flow.

TECHNICAL SPECIFICATIONS

- Max. capacity 200 l/min 40 bar
230 l/min 45 bar
- Distance 27/30 m jet plein
- Weight 2,6 Kg
- Length 440 mm

SPRAY JET



BLADE JET



FLOWS

FULL JET

